

600 SERIES

Acoustic Operable Partitions

innovation you get more with
HUFCOR PARTITIONS

About GIBCA



Gibca Limited Company (FZC) is a leading manufacturer of premium contract furniture throughout the Middle East, Central Asia, and Africa.

Since its establishment, its defining features are its quality and potential to innovate. Trusted by architects and contractors worldwide, Gibca has made over 50,000 installations spanning Middle East, Central Asia and North Africa.



The culture of innovation and creativity has established Gibca as the leading space management solution provider in the region. All our products help exploit to the fullest; the potential that every space offers.

Our state of art manufacturing facility and an extremely talented technical team turns out a wide range of custom made products which affirm our reputation for expertly engineered design and top quality workmanship.



We seek to provide each of our customers highly personalized service right from design to after sales.

Our goal is simple – we help you manage your space better!

The relationship between GIBCA and Hufcor Inc. USA - the most installed brand of operable walls is more than two decades old.

Hufcor being the pioneer in the field of operable walls with the company starting way back in early 1900's has successfully managed its lead in the industry with a deep rooted culture of innovation and technical advancement at the company. Currently the company holds the highest number of patents and is responsible for several revolutionary advancements in the industry.

GIBCA has been their licensee for the region since early 90's and currently produces almost the entire range of Hufcor operable walls at our state of art manufacturing facility in Oman. Our products are used in some of the world's finest hotel meeting rooms and ballrooms, educational and health care institutions, religious buildings, convention centers, recreational and commercial facilities.

Our partitions are known for their quality construction, durability, beauty, versatility, easy movement, and quiet operation. We are proud of our references in the region that includes several landmark projects requiring exceptional engineering and project management skills to complete.

Being the largest manufacturer in the region and the only supplier to have a dedicated post warranty support team, we are extremely grateful for the end user support that we currently enjoy.



600 Series

600 SERIES FEATURES & BENEFITS

Four-finger, multiple contact sweep seals
"Quick-Set" top and bottom mechanical seals
Standard 1"[25] top and 2"[51] bottom clearances (deeper bottom clearances optional on single 4"[102] thick panels)

Welded, heavy-duty 16-gauge steel frame

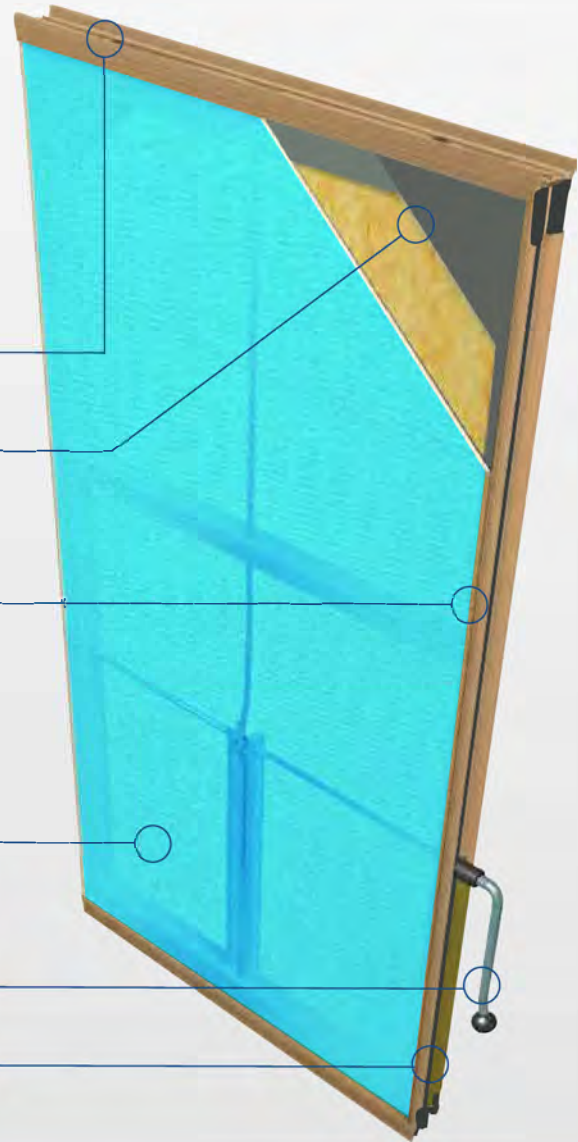
Protective vertical edge trim or optional monolithic edges
Available in three standard trim colors:
Lamb's Wool, Brown or Gray. Custom colors for metal trim are available for an additional charge.



Gypsum and steel acoustic faces with
Stackable surface options
Standard vinyls, fabrics, carpets and custom finishes may also be applied

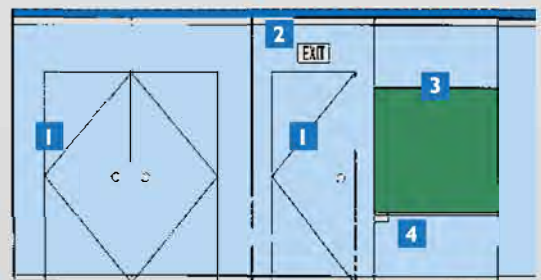
Waist-high seal activator for fast, easy setup

Deep nesting, vertical bullnose/astragal system



OPTIONS FOR OPERABLE PARTITIONS

- 1. ADA Compliant Pass Door** - Available in single or double doors, Hufcor pass doors comply with ADA requirements and are of the same construction and finish as the panels. Options include automatic door closers, locks and prep for windows. No threshold required.
- 2. Exit Signs** - Surface mounted or inset exit signs are available for use on pass doors. Choose either green or red with white letters.
- 3. Work Surfaces** - Chalkboard, inset and full height dry erase marker and tackboard work surfaces can be inset or untrimmed and include a full-width pen or chalk rail. The chalk and dry erase marker boards resist damage, abrasion, scratching and color fading, and wipe clean with a dry cloth or eraser.
- 4. Eraser Pocket** - This handy inset pocket holds a standard chalkboard eraser or other work surface accessories.



GIBCA now offers HUF COR 600 Series operable partition - the most versatile and aesthetically pleasing operable wall constructed today.

It combines the durability of a welded steel frame with the design versatility of various acoustical and decorative face constructions. The panel design enables the 600 series to be manufactured with Hufcor's quick-set mechanical top and bottom seals that provide the most reliable and fastest in-field operation. Hufcor's time-tested protective edge trim is standard on both the 3" [76 mm] and 4" [102 mm] thick models yet both can be supplied with a monolithic, untrimmed edge. The deep nesting, interlocking bullnose/astragal and integrated seals provide a reliable vertical seal that keeps out sound.

With standard acoustic ratings up to 54 STC as per ASTM E-90, we also offer **ultra STC construction with industry leading acoustic rating of 56 STC**. Unlike most manufacturers we test our panels bare; field finishing or thicker finishes used on most projects contribute positively to partition performance. Our partitions are backed by an illustrious field performance history as evident from the independent third party tests (NIC) carried out on our various installations.

Trim Colors – standard

The 600 series is available in three standard trim colors - lamb's wool, Brown or Gray. Custom colors for metal trim are also available for an additional charge.

Model Number Chart

When specifying the Hufcor 600 series, simply choose performance features – STC rating, trim color, protective edge trim, pass doors, finishes – as needed on the project.

Our model numbers are easy to understand once you know the code (see the code chart below).

Suspension System

630 SERIES STC & Hanging Weights			640 SERIES STC & Hanging Weights		
Models	Sound ¹ Transmission Class (STC)	Hanging Weight ² Lbs./Sq.Ft. [Kg./Sq.M]			
631/632/633	51	10.2 [49.8]	641/642	56	13.6 [66.4]
631/632/633	49	8.9 [43.5]	641/642/643	54	10.9 [53.2]
631/632/633	47	7.8 [38.1]	641/642/643	52	9.5 [46.0]
631/632/633	43	7.3 [35.6]	641/642/643	49	8.5 [41.2]
631/632/633	41	5.7 [27.8]	641/642/643	47	8.0 [38.7]
			641/642/643	43	7.8 [37.8]

First Digit 6: 600 Series

Second Digit 3 or 4: 3" or 4" thick panels

Third Digit:
1 for single models; 2 for paired models; 3 for continuously hinged (train) models

Fourth Digit:
E for Electric operation; F for Fire-Rated

1st Digit	2nd Digit	3rd Digit	4th Digit	Model Number
Series	Panel Thickness	Configuration	Optional Code for Special Requirements	
6	3" [76]	Single Panels		631
6	3" [76]	Paired Panels		632
6	3" [76]	Continuously Hinged (Train)	E = Electric Operation	633, 633E
6	4" [102]	Single Panels	F = Fire Rated Model Available	641, 641F
6	4" [102]	Paired Panels	F = Fire Rated Model Available	642, 642F
6	4" [102]	Continuously Hinged (Train)	E = Electric Operation	643E

Note: Metric dimensions in [] are in millimeters unless otherwise indicated.

Series 630

The panels are nominally 3" [76] thick, and have a frame of 16 ga. steel. The horizontal top seals are retractable, provide 1" [25] nominal operating clearance, and exert upward force when extended. The bottom sound seal is also retractable and provides up to 2" [50] floor clearance (to accommodate out-of-level floors). All panels, including pass door panels and lever closure panels must have retractable top and bottom seals.

Select for Value: Series 630 panels offer a wide choice of finish options, accessories, and sound control levels.

STC Ratings: 41, 43, 47, 49, 51

Top supported Individual, manually operated panels offer optimum room flexibility. The track system enables panels to negotiate turns and be used in alternate locations.

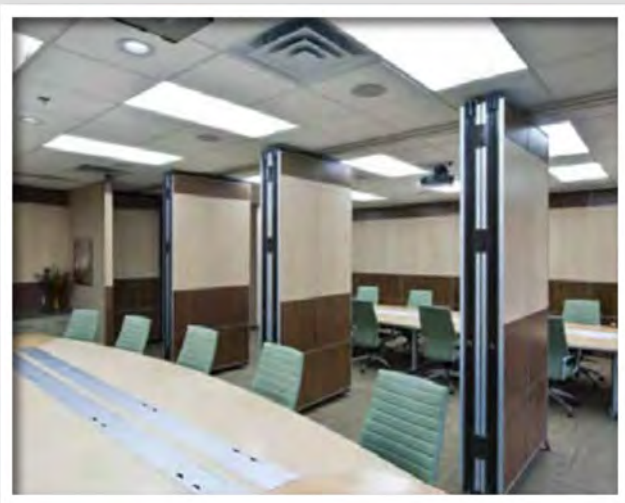


Maximum Opening Height: 24'3" [7391]
Maximum Opening Width: Unlimited

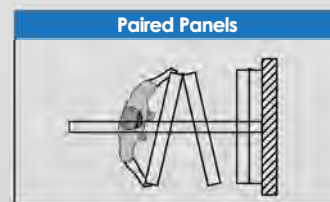
Series 631 - Individual, Omni-Directional



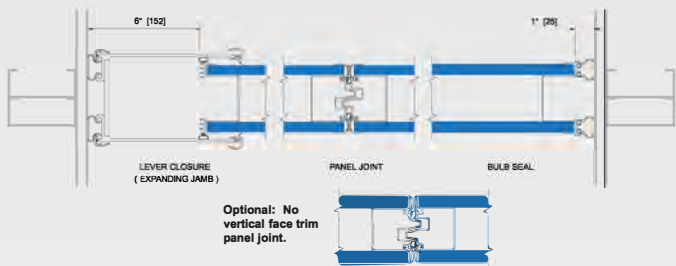
Series 632 - Paired Panels



Top supported center stacking, paired panels used for wall-to-wall space division. Panels are hinged in pairs allowing fast setup. They may be stacked at either or both ends of the track or in a "pocket". One or more pair of panels may also be placed anywhere along the track for use as sight dividers.



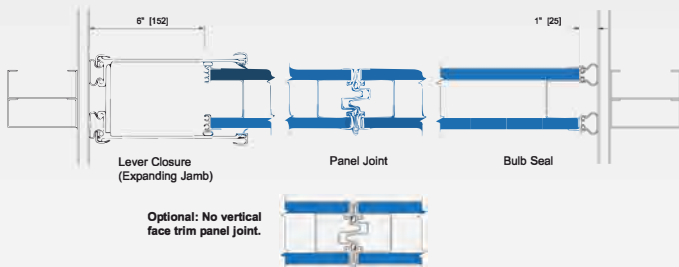
Maximum Opening Height: 24'3" [7391]
Maximum Opening Width: Unlimited



Final partition closure using Lever Closure with expanding jamb. Solid blocking required at both ends to withstand 250 lbs. [113.4 kg] of lateral force.

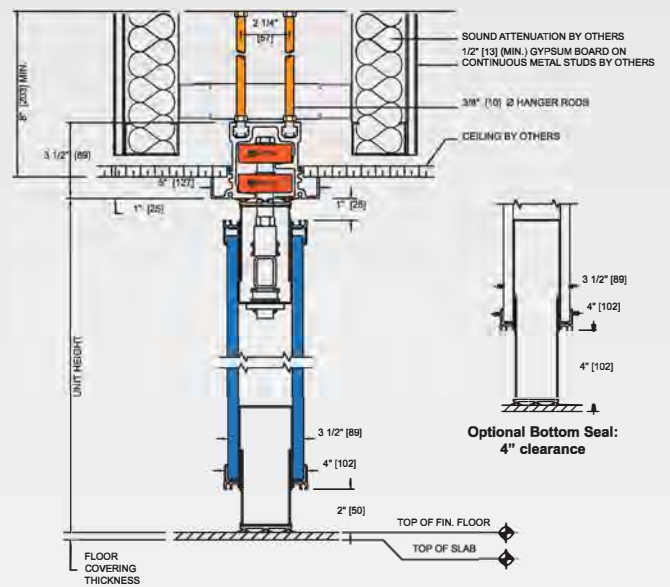
Series 631 - Individual, Omni-Directional

HORIZONTAL SECTIONS



Final partition closure using an expanding jamb closure. Recommended for optimum sound control. Solid blocking is required at both ends to withstand 250 lbs. [113.4 kg] of lateral force.

Series 632 - Paired Panels



VERTICAL SECTION

Shown with Type 36 Aluminum track. Standard for panel weights to 1000 lbs. [455 kg]. Alternate track systems may be used providing the height and weight limits are within manufacturer's guidelines.

Series 631 - Individual, Omni-Directional

Series 640

The panels are nominally 4" [102] thick, and have a 16 ga. steel frame. The top and bottom horizontal sound seals are retractable and provide floor clearance (to accommodate out-of-level floors). The faces may be covered from a wide selection of vinyl colors and patterns.

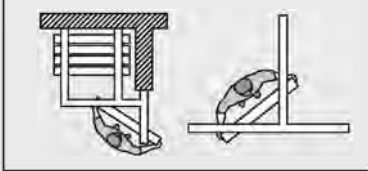
Select for Durability and Aesthetics: The 640 offers panel finishes for the ultimate in design flexibility. Even the frames may be color matched to coordinate with the faces. The 640 is a popular choice for hotel meeting rooms, convention centers, commercial facilities, or other high use facilities.

STC Ratings: 43, 47, 49, 52, 54, 55, 56

Individual, manually operated panels offer optimum room flexibility. The track system enables panels to negotiate turns and be used in alternate locations.

Series 641 - Individual, Omni-Directional

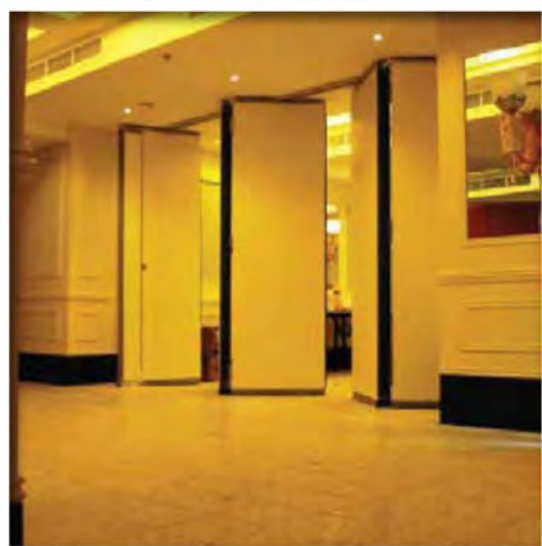
Individual, Omni-Directional Panels



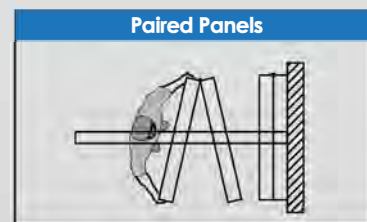
Maximum Height: 40'5" [12.3m]*
Maximum Opening Width: Unlimited



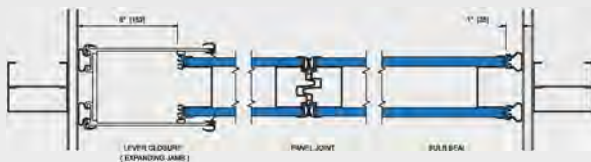
Series 642 - Paired Panels



Select for wall-to-wall space division. Panels are hinged in pairs allowing fast setup. They may be stacked at either or both ends of the track or in a "pocket". One or more pair of panels may be placed anywhere along the track for use as sight dividers.



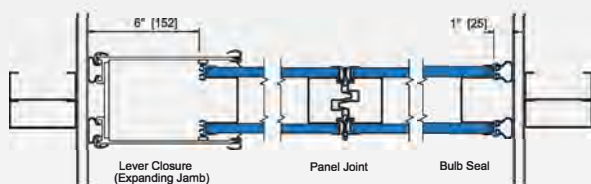
Maximum Height: 24'3" [7391]
Maximum Opening Width: Unlimited



HORIZONTAL SECTION shown with standard vertical trim.
Final partition closure using expanding closure panel. Solid blocking required at both ends to withstand 250 lbs. [113.4 kg] of lateral force.

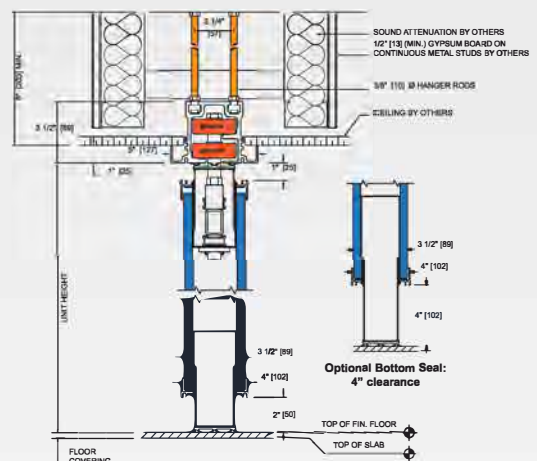
Series 641 - Individual, Omni-Directional

HORIZONTAL SECTION



HORIZONTAL SECTION with Vertical Trim
Final partition closure using an Expanding Jamb (Lever Closure). Solid blocking is required at both ends to withstand 250 lbs. [113.4 kg] of lateral force.

Series 642 - Paired Panels



VERTICAL SECTION

Shown with Type 36 Aluminum track.
Standard for weights to 1000 lbs. [455 kg].
Alternate track systems may be used providing the height and weight limits are within manufacturers guidelines.

Series 641 - Individual, Omni-Directional

* Taller heights are available. Contact GIBCA for assistance.
Note: Metric dimensions in [] are in millimeters unless otherwise indicated.

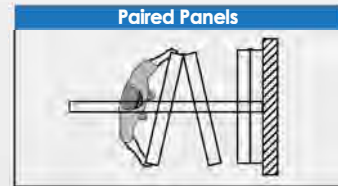
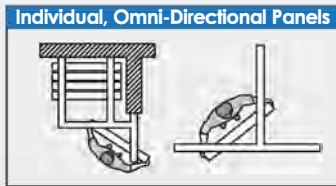
Series 640F - Fire protection with no loss of sound control

Previous nomenclature 6500F-6600F series

Hufcor Fire Rated Partitions are designed for use in schools, hospitals, nursing homes, theaters, meeting rooms, convention centers and other public facilities.

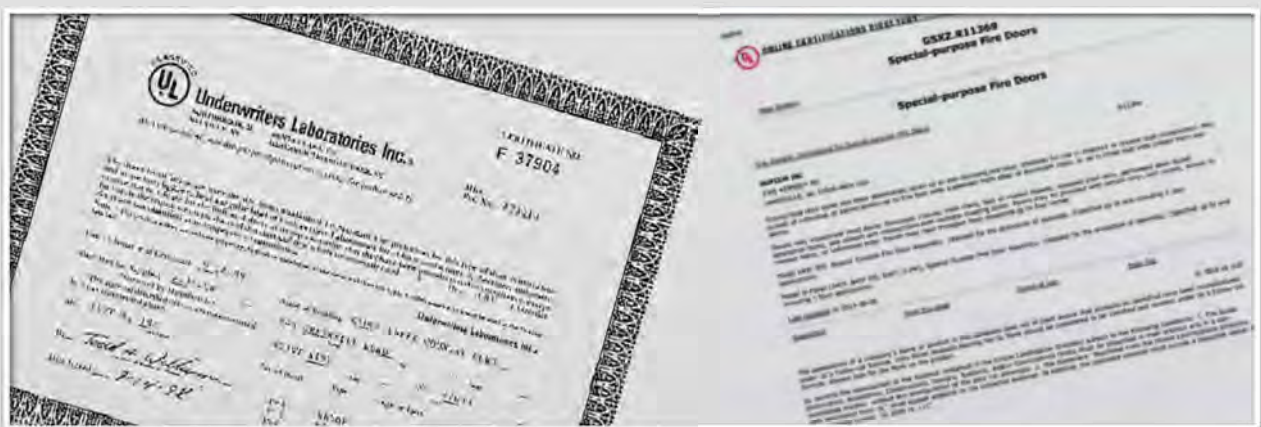
Hufcor Fire Rated Partitions should be used wherever life safety is a concern due to building layout. Consult your local fire codes or architect for guidelines for possible directions of fireworks for greater safety and peace of mind.

Select for Durability & Fire Protection: These rugged steel panels resist daily wear and tear and have a one-hour fire rating. They are an excellent choice for meeting rooms, heavy-use facilities, or wherever local codes require a fire rated partition.

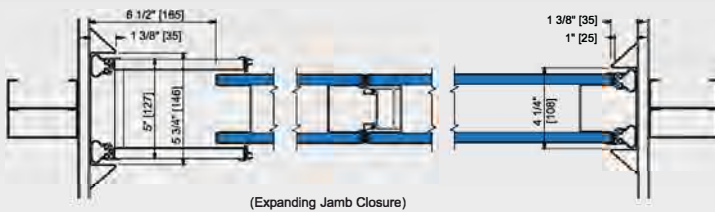


Only Hufcor offers you all of these advantages:

- ◆ A choice of Omni panels for maximum layout and movement flexibility, or Paired panels for faster set-up and take-down.
- ◆ The ability to incorporate pass doors with push to-operate hardware and hidden door closers.
- ◆ Exclusive multiple meeting post permits intersections and corners or bends at any angle.
- ◆ Inset chalk, marker, tack and projection surfaces.
- ◆ Exclusive Quick-Set[®] top and bottom mechanical seals provide up to 4" of floor clearance to lock out sound and allow for deflection. Seals fully retract for friction-free movement.
- ◆ Superior acoustic isolation with an STC rating of 51 or 54 - that's even quieter than many permanent structural walls.
- ◆ Fire protection with no loss of sound control . Series 640F the only firewall in industry that is tested for both acoustics and fire rating.



Technical Details



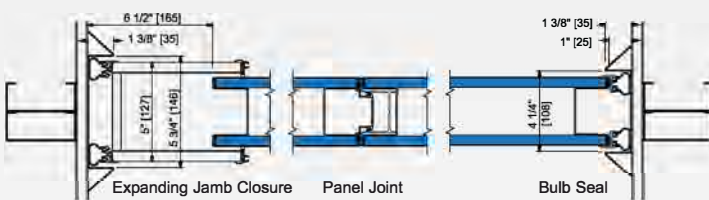
(Expanding Jamb Closure)

Final partition closure with expanding jamb. Solid blocking required at both ends to withstand 250 lbs. [113.4 kg] of lateral force.

Final partition closure using surface wall jambs.

Series 641F - Individual, Omni-Directional

HORIZONTAL SECTIONS

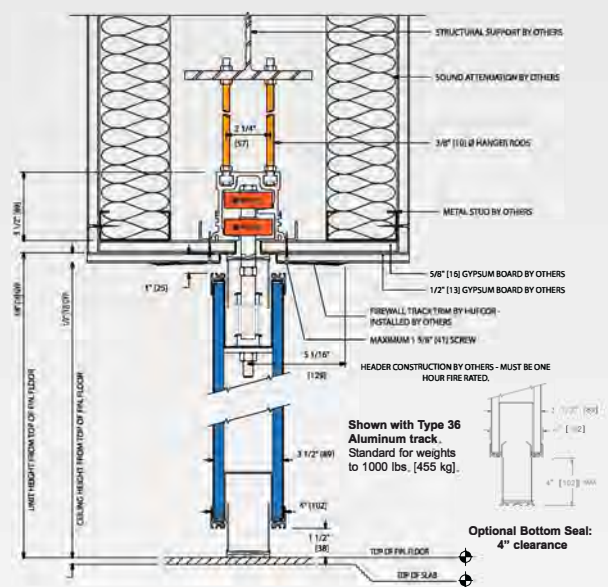


Solid blocking required at both ends to withstand 250 lbs. [113.4 kg] of lateral force.

Final partition closure using surface wall jambs.

Series 641F - Firewall Paired Panels

Header construction by others. Must meet or exceed one hour fire rating.



VERTICAL SECTION

Shown with Type 36 Aluminum track. Standard for weights to 1000 lbs. [455 kg].

Optional Bottom Seal: 4\"/>

Operable Partition Options

Pass Door

ADA Compliant Pass Door

Available in single or double leaf configuration, Hufcor pass doors comply with ADA requirements and are of the same construction & finish as of the panels. No threshold or foot bolt stabilizers are required.

Pass door options include:

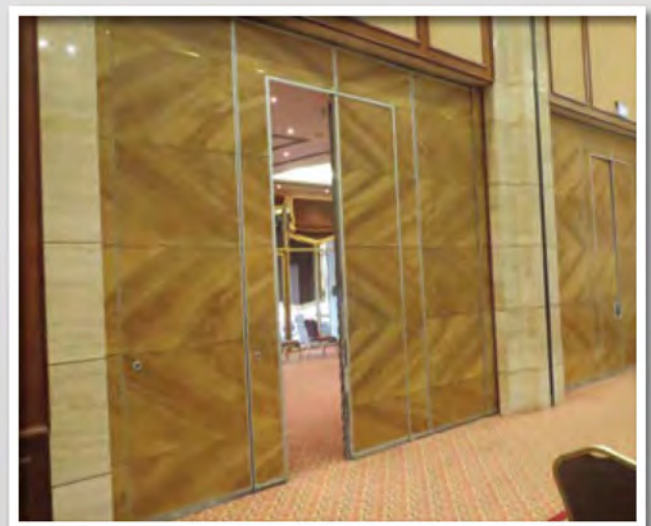
Exit signs, Automatic door closer, Panic Hardware, Locks, Frame and prep for window, Peep viewer.



Single Door



Double Door





The finishing touch to your installation,

pocket doors cover the opening of the partition storage area. The doors may be factory finished to match the partitions or field-finished to match the perimeter walls.

POCKET DOOR SPECIFICATIONS

Construction

Pocket Door panels are a nominal 3" [76] thick and similar in construction to the panels used in the opening. The welded steel frame is 16 ga. painted steel with aluminum vertical edge and face protection. (Optional for doors with steel faces only: no protective vertical face trim.)

Seals

The horizontal top and bottom seals are of multi-ply vinyl sweep strips. When the pocket doors are in the closed position, the seals contact an aluminum head member which extends across the pocket from the track to the pocket walls. The pocket door is secured in the closed position by an expanding internal mechanism located approximately 46" [1168] from the floor in the face of the door. The top mechanism extends into the horizontal header. A jamb plate is attached to the floor and captures the bottom mechanism.

Finishes

The exposed metal trim and jambs are powder coated Lamb's Wool, Brown or Gray. The metal trim may be custom powder coated for an optional additional charge. The aluminum header is clear anodized; optional custom anodizing is available.

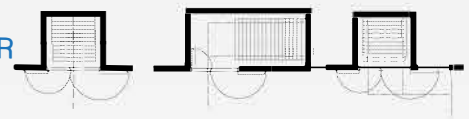
The face finish is factory applied vinyl. Carpet or fabric from Hufcor's standard color selectors may be ordered for an additional charge. Custom finishes are available but require factory approval for manufacturing compatibility. The doors may also be unfinished for on-site field finishing to precisely match the room decor.

Shown are the most common configurations; however, others may be customized to your particular project:

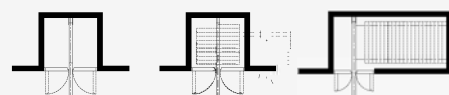
**TYPE 1
POCKET DOOR**



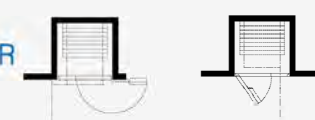
**TYPE 2
POCKET DOOR**



**TYPE 3
POCKET DOOR**



**TYPE 4
POCKET DOOR**



Track System for Operable Walls

A quality track system assures your partitions will move easily for years to come and enhance fast panel set-up and take-down.

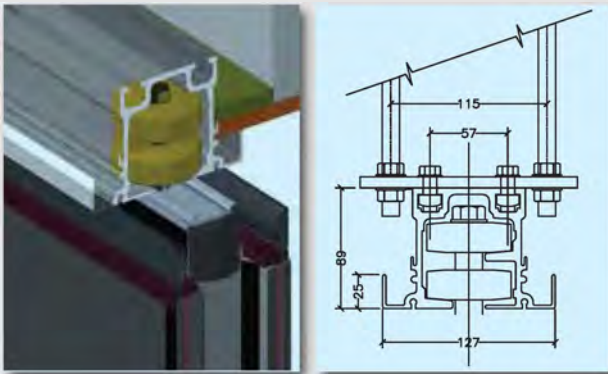
All Hufcor tracks are rigorously tested to last aluminium of 160 km (100 miles), approximately ten years of use. Job requirements vary, which is why Hufcor offers a selection of steel and aluminum tracks to meet your needs.

Our patented designs are the most imitated in the industry.

Our aluminum tracks are of clear anodized extruded architectural grade 6063-T6 alloy. The list of aluminum benefits is long. Among these are quiet carrier operations, consistent shape for end-to-end alignment, unitized design for incorporating header panels and alignment pins, corrosion-resistance, and enable anodizing for a smooth, hard running surface needed for proper carrier movement.

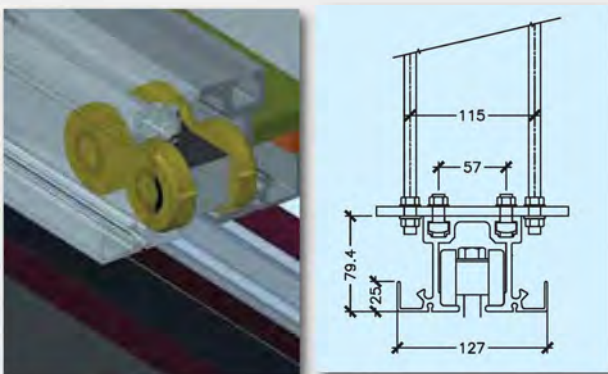
Track Options

TYPE 36 OMNI-DIRECTIONAL TO 455 kg



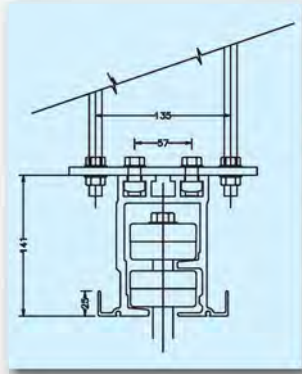
For Omni-Directional panels up to 455 kg (1000 lbs). Patented by Hufcor, this unique track and carrier system is the world's most imitated. Two carriers are provided per panel. Each carrier has two horizontal counter-rotating wheels that roll (not slide) in the track. Each wheel has precision-ground bearings, encased with Delrin for quiet operation. Carriers easily negotiate square or angled corners without switches. Minimum dimension from the ceiling to the structure is 203 mm (8").

TYPE 40 PAIRS AND MANUAL TRAINS TO 409 Kg



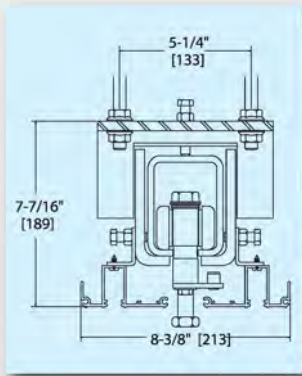
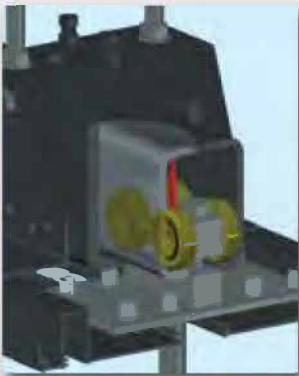
For Paired Panels and Manual Trains up to 409 kg (900 lbs). One 4-wheeled carrier is provided per panel. Each wheel consists of molded polymer tires on hardened steel bearings. Resilient mounted body for quiet operation and load distribution. Minimum dimension from the ceiling to the structure is 203 mm (8").

TYPE 57 OMNI-DIRECTIONAL TO 680 kg



For Omni- Directional panels weighing 455-680 kg (between 1000 and 1500 lbs). Two carriers are provided per panel. Each carrier has two horizontal counter-rotating wheels that roll (not slide) in the track. Each wheel has precision-ground bearings, encased with Delrin, steel banded and reinforced. Carriers easily negotiate square or angled corners. Minimum dimension from the ceiling to the structure is 305 mm (12").

Type 11 Track Available On Pairs, Single Panels and Electric Continuously Hinged models to 1364 kg



For Pairs and Electric Trains weighing up to 1500 lbs. [680] and Omnis weighing up to 3000 lbs. [1364] per panel. The track is made of 1/4" [6] slotted structural steel tubing, painted black. The track trim is clear anodized aluminum. All intersections are factory assembled and welded. Curves, diverters or switches are available. One carrier is provided per panel for pairs and trains; two carriers per panel for omnis. Each carrier has four steel wheels with precision-ground radial bearings. Bearings are inserted into a steel tire. The steel tire rim fully captures the bearing.

Carriers may be programmed for self-directing and sorting. Minimum dimension from the ceiling to the structure is 12" [305]; the minimum becomes 16" [406] when used with electric partitions.

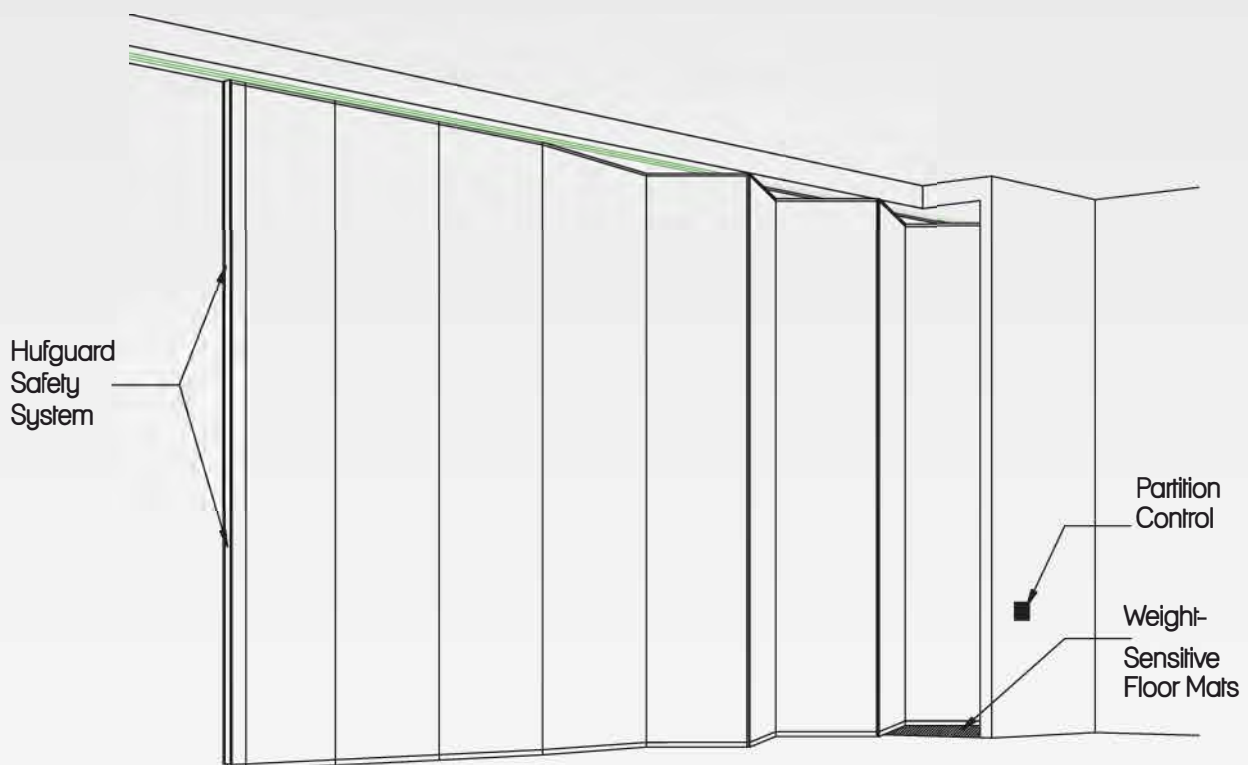


Electrically Operated, Continuously Hinged (Train) panels.

Available in nominally 3" (76 mm) and 4" (100 mm) thickness; 600E fully automatic partitions consist of panels which are hinged together and are operated by two electric key switches for fast, safe set-up.

Standard product features include:

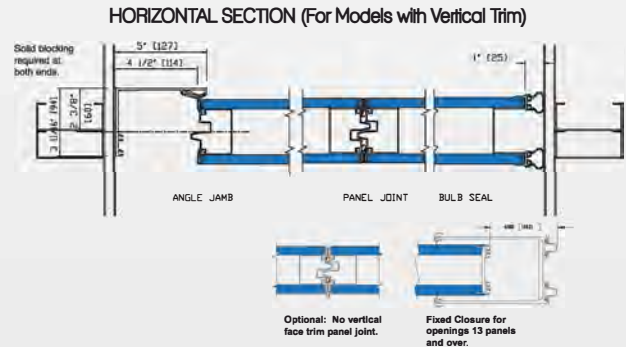
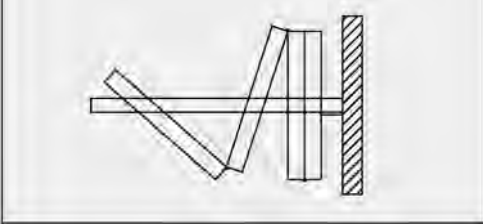
- 1) The top horizontal sound seal is of multi-finger vinyl, and the bottom sound seal is retractable and provides up to 2" [50] floor clearance (to accommodate out-of-level floors). The seal activator is mounted on the lead edge of panel and it automatically drops the seals when panels are in pre-programmed location.
- 2) Retractable seals maintain acoustics over time and adds stability to the partition when extended. The seals completely retract during movement to eliminate floor damage. Unlike other manufacturers inclusion of pass doors do not eliminate retractable seals in any of the panels. Partitions require no floor track or guides to operate.
- 3) The faces may be covered from a wide selection of vinyl colors and patterns. The face substrate varies by the level of sound control required (STC rating).
- 4) Carrier on each panel: Supports the weight of each panel and ensures smooth, even operation. Unique carrier design allows the partition to be setup perfectly flat without waves.
- 5) Low profile hinges: Hinges are only used to connect the panels and are not required to carry any panel weight. No ugly huge butt hinges are used.
- 6) Safety: Standard safety feature is two key switches which ensure operator line of sight on either side of the partition. Optional features include hufguard – lead edge obstruction detection system and pressure sensitive mats.



Series 643E/633E – Electrically Operated, Continuously Hinged (Train) Panels

Top supported center stacking panels are hinged together and are operated by two electric key switches for fast, safe set-up. Select for wall-to-wall space division. Panels are hinged together and are automatic moved across the opening.

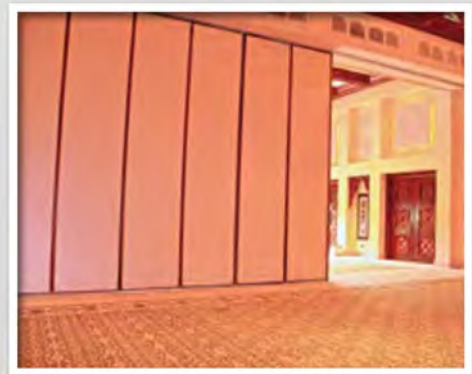
Continuously Hinged (Train) Panels



Electrically Operated, Continuously Hinged (Train) Panels

		Series	
		643E	633E
Panel Thickness		4" [101mm]	3" [76mm]
Max. Height (Standard)		30'3" [9.2m]	28'3" [8.61m]*
Standard Opening Width	With Retractable Bottom Seals	100' [30.48m]	100' [30.48m]
	With Continuous Bottom Seals	157' 4" [47.9]	157' 4" [47.9]
STC Rating		43,47,49,52 & 54	41,43,47,49 & 51

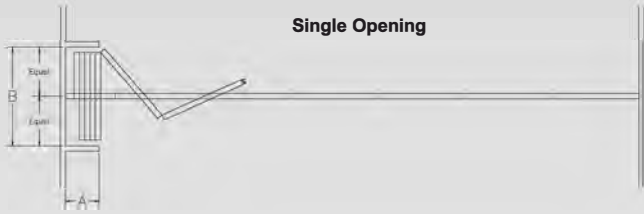
* Contact GIBCA for sizes exceeding those shown and/or bi-parting pairs



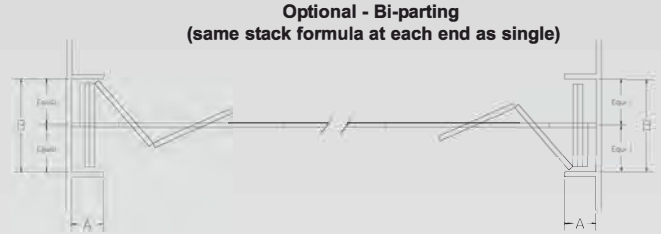
Layout Options

STACK DIMENSIONS

The following stack depth and width dimensions are based on standard construction with vinyl faces. Optional construction and/or face covering may increase stack depth requirements.



Single Opening



Optional - Bi-parting
(same stack formula at each end as single)

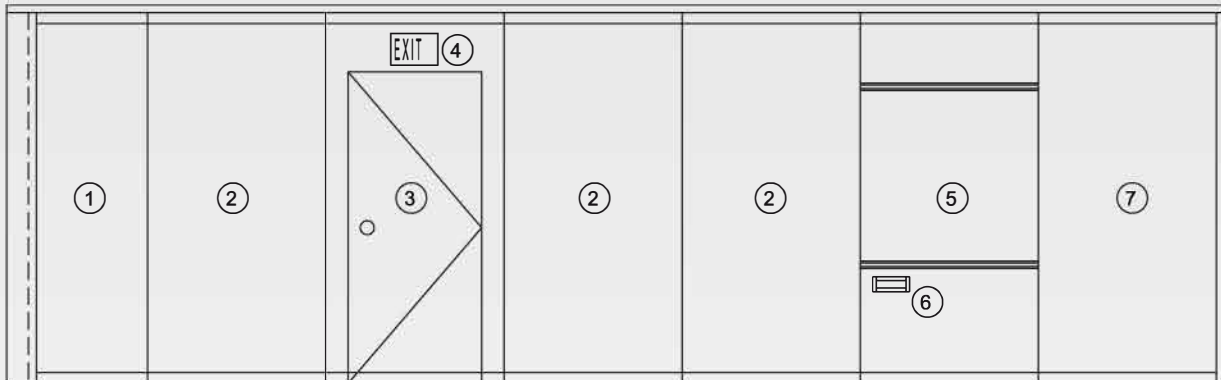
A= Stack Depth, 4-1/4" [108] per panel plus 8-1/2" [216]

B= Stack Width: Panel width + 12" [300]

HANGING WEIGHT			
MODEL	STC	Lbs./Sq. Ft.	Kg./Sq. M
643E	43	7.8	37.8
643E	47	8.0	38.7
643E	49	8.5	41.2
643E	52	9.5	46.0
643E	54	10.9	53.2

HANGING WEIGHT			
MODEL	STC	Lbs./Sq. Ft.	Kg./Sq. M
633E	41	5.7	27.8
633E	43	7.3	35.6
633E	47	7.8	38.1
633E	49	8.9	43.5
633E	51	10.2	49.8

ELEVATION



OPTIONS & ACCESSORIES

1. **Stack panel.** The motor drive unit closes and seals the opening.
2. **Basic panel**
3. **ADA compliant pass doors** - Single 3/0 x 7/0 [914 x 2132] or 3/0 x 6/8 [914 x 2030]. Of the same construction, thickness, and finish as the basic panels. Push/pull latching handle. Options include key lock, windows, and automatic door closer. No threshold is required.
4. **Exit Sign** - Recessed or surface mounted, self illuminated.
5. **Work Surfaces** 4'0" [1219] high x panel width, recessed, mounted approx. 30" [762] above the floor:
 - a. Markerboard and projection/writing surfaces (from Hufcor standard color selector).
 - b. Tackboards of 2mm cork board covered with vinyl (from Hufcor standard color selector).
 - c. Chalk/marker tray (standard on chalk and projection/ writing boards).
6. **Recessed Eraser Pocket** (8" x 2" x 1-1/4" deep [203 x 50 x 31]).
7. **Lead panel** with bulb seal to prevent sound leaks at adjacent wall.

Note: Metric dimensions in [] are in millimeters unless otherwise indicated.





Laminate Finish

New Designer Finishes



Fabric



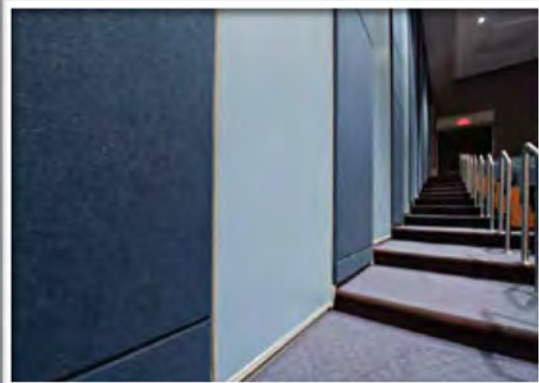
Pre-coated Steel



Vinyl



Dry Marker Surface



Carpet





WORLD LEADER IN FLEXIBLE SPACE MANAGEMENT

OPERABLE
GLASSWALL
PORTABLE
ACCORDION

PARTITIONS

LEED™ VERSION 3 - 2009 UPDATE

The Materials In Hufcor Products Can Contribute To The Achievement Of LEED Points



On April 27, 2009, USGBC launched LEED v3. LEED is an internationally recognized certification system that measures how well a building or community performs across all the metrics that matter most: energy savings, water efficiency, CO2 emissions reduction, improved indoor environmental quality, and stewardship of resources and sensitivity to their impacts. Developed by the U.S. Green Building Council (USGBC), LEED provides building owners and operators a concise framework for identifying and implementing practical and measurable green building design, construction, operations and maintenance solutions. The ability to be flexible allows LEED to evolve, taking advantage of new technologies and advancements in building science while prioritizing energy efficiency and CO2 emissions reductions.

As a manufacturer, Hufcor also recognizes the importance of innovation in sustainable design. Hufcor Operable Partitions, Accordion Partitions and Moveable Glasswall Partitions are highly engineered products manufactured with raw materials such as Gypsum Dry Wall, Steel, Aluminum, Glass and Wood. Specified percentages of these materials can contribute to the achievement of LEED points in the Materials and Resources Category of the LEED rating system. The materials in Hufcor products can also contribute to the achievement of LEED points in the Indoor Environmental Quality Category of the LEED rating system.



Following is a brief description of the possibly applicable credits from the Project Scorecard checklist for LEED 2009 for New Construction and Major Project Renovation.

MR Credit 1.2: Building Reuse-Maintain interior nonstructural elements 1 point

Intent

To extend the lifecycle of existing building stock, conserve resources, retain cultural resources, reduce waste and reduce environmental impacts of new buildings as they relate to materials, manufacturing and transport.

Requirements

Use existing interior nonstructural elements (e.g., interior walls, doors, floor coverings and ceiling systems) in at least 50% (by area) of the completed building, including additions. If the project includes an addition with square footage more than 2 times the square footage of the existing building, this credit is not applicable.

Potential Technologies & Strategies

Consider reusing existing building structures, envelopes and interior nonstructural elements. Remove elements that pose a contamination risk to building occupants, and upgrade components that would improve energy and water efficiency such as mechanical systems and plumbing fixtures. Quantify the extent of building reuse.

MR Credit 3: Materials Reuse 1-2 points

Intent

To reuse building materials and products to reduce demand for virgin materials and reduce waste, thereby lessening impacts associated with

the extraction and processing of virgin resources.

Requirements

Use salvaged, refurbished or reused materials, the sum of which constitutes at least 5% or 10%, based on cost, of the total value of materials on the project. The minimum percentage materials reused for each point threshold is as follows:

Reused Materials Points

5% - 1
10% - 2

Mechanical, electrical and plumbing components and specialty items such as elevators and equipment cannot be included in this calculation. Include only materials permanently installed in the project. Furniture may be included if it is included consistently in MR Credit 3: Materials Reuse through MR Credit 7: Certified Wood.

F-4240 6/09 TP



Service & Maintenance

As the only operable wall supplier in the region with its own service and maintenance team we have been setting the industry standards in the region in terms of after sales support. We have a huge list of satisfied customers who have benefited from our maintenance and refurbishment program to transform their decade old installations into fully functional resurfaced partitions at an extremely competitive cost.

Operable walls need to be serviced to ensure key functions are preserved: Through periodic maintenance, our products will provide years of trouble free, reliable functionality, that ensures your business is not interrupted, delayed or inconvenienced simply because a wall jamb or fails to lock into position properly.

Why service your partitions ?

- Extending life of your movable walls.
- Increase the operational efficiency and durability.
- Helps you identify damage.
- Reducing the requirement for emergency repairs.
- Ensuring correct acoustic performance.

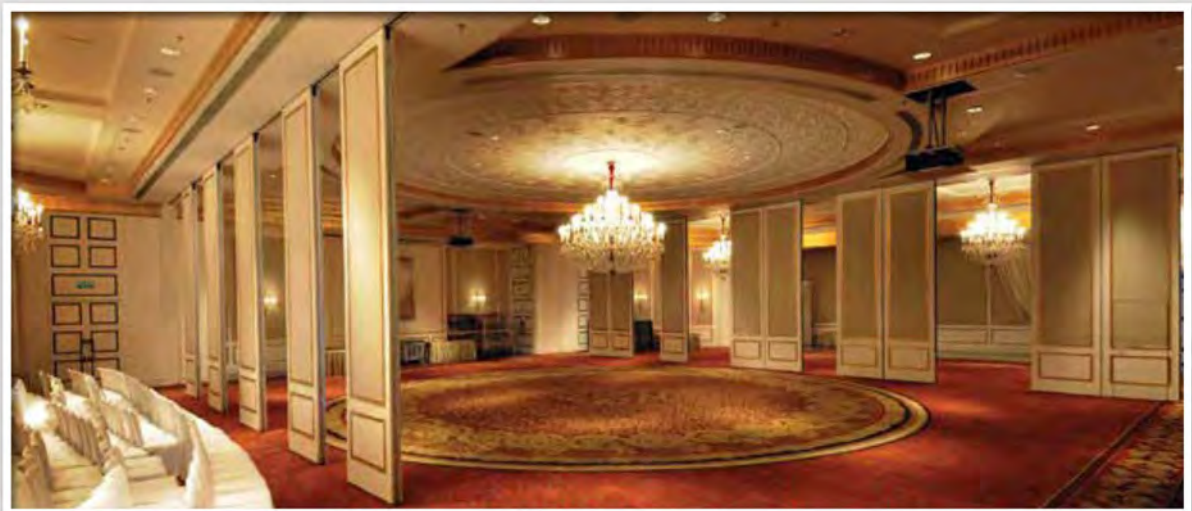


Choose GIBCA maintenance service department for a complete line – up of quality services, parts and products.

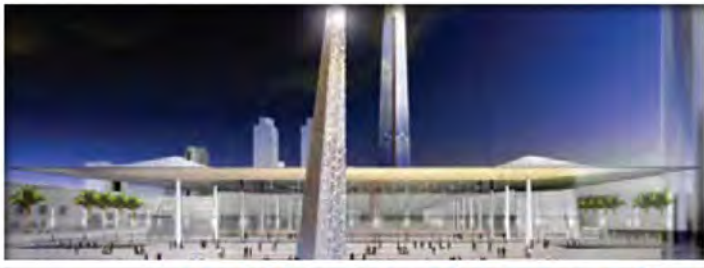
What we offer :

- Inspection Service.
- Resurfacing of partition panel faces in different finishes.
- Quarterly & Half yearly Maintenance Service.
- Repair for movable partition.
- Partition/ Track replacement and retro fit of existing partitions & track.

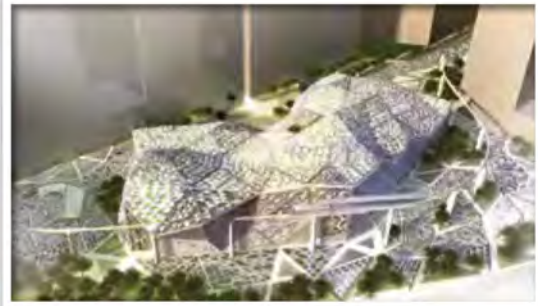
If for any reason a service call is necessary, our dedicated service technicians will gladly call and rectify the situation both speedily and efficiently.



Project References



DOHA CONVENTION CENTER - QATAR - 18mtrs



KAFD CONFERENCE CENTRE
- SAUDI ARABIA - 10.7mtrs



FALCON TOWER
- BALLROOM
- QATAR - 10.4mtrs



FOUR SEASONS HOTEL
KINGDOM CENTRE
- SAUDI ARABIA - 9.8mtrs



ST. REGIS HOTEL SADIYAT ISLAND
- UAE - 8.8mtrs



REGENT HOTEL - QATAR - 7mtrs



LE MERIDIEN HOTEL- DUBAI- 9.7mtrs



THE ADDRESS HOTEL
- DUBAI - 8mtrs



DOKAEE TOWER -H PLAZA
- SAUDI ARABIA - 5mtrs



RAS LAFFAN EMERGENCY &
SAFETY COLLEGE - QATAR - 7.7mtrs



NOUVEL HOTEL
5 ETOILES - TURKMENISTAN
- 7mtrs



FAIRMONT HOTEL -ABU DHABI - **7mtrs**



SHANGRI-LA HOTEL -QATAR - **7mtrs**



CROWNE PLAZA - KUWAIT - **7.7mtrs**



ATLANTIS THE PALM HOTEL - UAE - **7.5mtrs**



ZALLAQ RESORT
BAHRAIN
- **6mtrs**



FLAME TOWER
BAKU- AZERBAIJAN
- **6.4mtrs**



KAUST - SAUDI ARABIA - **6.5mtrs**



SHERATON DAMMAM HOTELS & TOWERS
- SAUDI ARABIA - **7mtrs**

Think Space Management Think Gibca



HUFCOR Movable Glasswalls



GIBCA Wet Area Cubicles



GIBCA Locker Systems



SKYFOLD® Fully Automatic Vertically Rising Partitions



GIBCA Office Partition Systems



GIBCA Internal Wall Cladding



Address: P.O.Box 312, Postal Code 322, Sohar, Sultanate of Oman

Tel: + 968 2685 0261, Fax: + 968 2685 0285, Email: info@gibcaoman.com, Website: www.gibcaoman.com