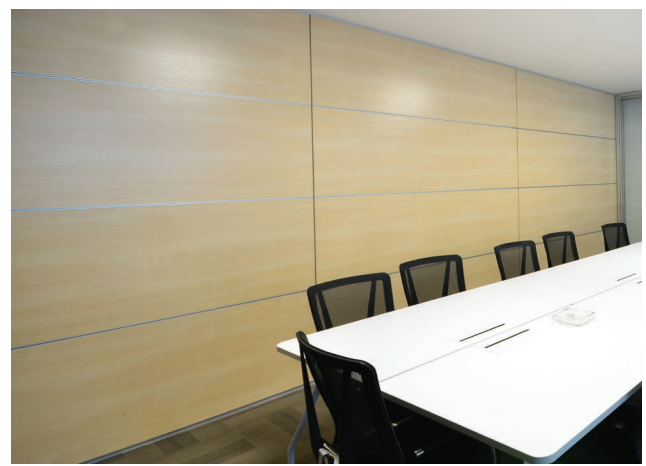


COLLECTION 2018

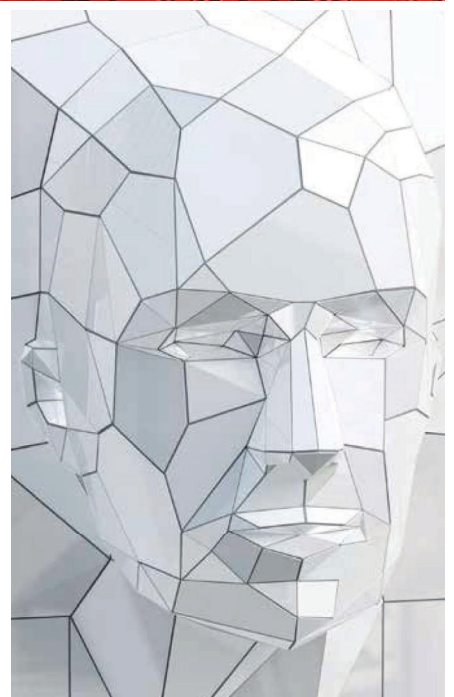
THIN LAMINATE

INTERIOR



FUNDERMAX®

**for
people
who
create**



GIBCA  **جيبكا**
GIBCA LIMITED COMPANY (FZC) LLC

About Gibca

Gibca Limited Company (FZC) which is a part of GIBCA Group has been long recognized as one of the leading manufacturers and suppliers of contract location furnishings.

Since Gibca's establishment, it's defining features are its quality and potential to innovate. Trusted by architects and contractors worldwide, Gibca has made over 50,000 installations spanning Middle East, Central Asia and North Africa. By fostering the culture of innovation and creativity, we have established ourselves as the region's leading space management solution providers.

The culture of innovation and creativity has established Gibca as the leading space management solution provider in the region. All our products help exploit to the fullest; the potential that every space offers.

Our state of the art manufacturing facility and an extremely talented technical team turns out a wide range of custom made products which affirm our reputation for expertly engineered design and top quality workmanship.

We seek to provide each of our customers highly personalized service right from design to after sales.

Our goal is simple – we help you manage your space better!



About Fundermax

FunderMax is an Austrian company steeped in its rich tradition, culture and values. FunderMax has grown organically just like the raw material they use for their products. It has transformed from a small family owned business into an international leader in the industry. Their roots are in the art of wood processing. Their product portfolio includes the highest quality materials made from wood and laminates.

FunderMax is constantly growing and evolving. Pushing the boundaries of creativity, they are the industry's leading trendsetters. They provide dedicated service to their industrial and private sector clientele and are committed to their employees. FunderMax's ultimate goal is to inspire through their designs and produce high quality products that adds great value to their client's projects.



The classic choice for furniture and interior design

High Compact Laminate is a highly durable and visually appealing product. This makes it the first choice for interior projects where high quality and aesthetic appeal is essential.



Manufactured using sophisticated technological process, Max HPL is characterized by its robustness, thermal resistance and versatility. It's versatility make it suitable for various interior applications.

Max HPL is a duroplastic high pressure laminate according to EN438-3*. It's made up of several layers of resin-impregnated wood-fibers compacted under high pressure at high temperatures.



scratch resistant



solvent resistant



food grade



impact resistant



easy to clean



heat resistant



quick installation



durable

Premium Surfaces

FunderMax is a source of inspiration and facilitator for striking interior design. Our exceptional finishes let you create the most unique and beautifully textured furniture, cabinets, wall cladding and doors.



MT - MATT

This surface provides just the right balance between matt and shimmering elements. Impressive with its neutral appearance.



SU - STRUCTURA

This refined surface with its porous structure is not only perfect for wood decors, it also offers a natural impact wit with plain decors.



NA - NATURA

Naturally beautiful, with a delicate structure, this surface skillfully captures the natural beauty and resilience of nature, transferring them perfectly into the world of materials.



LI - LIGNUM

The perfect partner for any wood decor. With its fine grain, this unique surface offers distinctive visual appeal and a truly tactile experience.

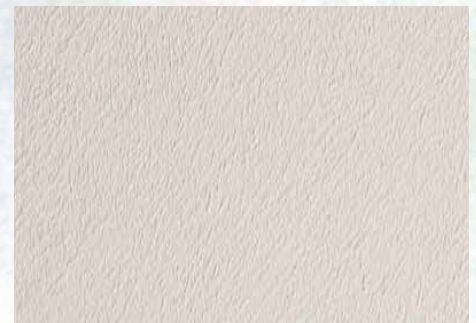


SG - MIRROR GLOSS

Technically it's almost impossible to achieve a glossier look. Mirror gloss is a high quality surface with an impressive finish bringing elegance to every piece of furniture.

GA - GRAFICA

Inspired by stone and concrete, this surface boasts a slightly rough finish, enhancing any decor with its exceptional, gentle light refraction.



*Price varies based on SURFACE type
*GA, LI - only available in 0.8 mm

Grade: Standard

Standard Surface: FH

Size: 2800 mm x 1300 mm / 4100 mm x 1300mm

Thickness: 0.8 mm / 1.0 mm

Physical Properties

FEATURE	TESTING STANDARD	UNIT OF MEASUREMENT	STANDARD VALUE	HGS / HGP ACTUAL VALUE	APTICO ACTUAL VALUE
Density	EN ISO 1183-1	g/cm ³	≥ 1,35	≥ 1,35	≥ 1,35
Resistance to dry heat	EN 438-2:2016, 16	Appearance	≥ Grade 4	≥ 4	≥ 4
Resistance to moist heat	EN 438-2:2016, 18	Appearance	≥ Grade 4	≥ 4	≥ 4
Dimensional stability at elevated temperature	EN 438-2:2016, 17	%	length: ≤ 0,55 width: ≤ 1,05	length: ≤ 0,55 width: ≤ 1,05	length: ≤ 0,55 width: ≤ 1,05
Scratch resistance	EN 438-2:2016, 25	Appearance	≥ Grade 3	≥ 3	≥ 3
Resistance to surface abrasion	EN 438-2:2016, 10	Revolutions	≥ 150	≥ 150	≥ 150
Impact stress with small ball	EN 438-2:2016, 20	N	≥ 20	≥ 20	≥ 20
Resistance to immersion in boiling water	EN 438-2:2016, 12	Appearance	≥ Grade 4	≥ 4	≥ 4
Resistance to water vapour	EN 438-2:2016, 14	Appearance	≥ Grade 4	≥ 4	≥ 4
Resistance to staining	EN 438-2:2016, 26	Appearance	≥ Grade 4	≥ 4	≥ 4
Gloss level at measuring angle of 85°	EN ISO 2813	Surface reflection	-*	-*	≤ 12

* DEPENDENT ON THE SURFACE STRUCTURE

TYPE S (STANDARD QUALITY) OFI CERT HPL EN 438 HGS

The key characteristic of this quality are highly durable surfaces which are scratch and impact resistant. Due to their thickness, these surfaces are particularly resistant to boiling water, numerous household chemicals, as well as dry and damp heat.

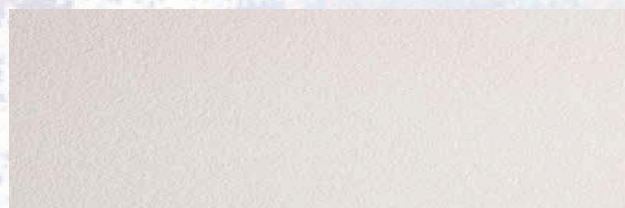
The reverse face of Max HPL panels is designed to ensure flawless adhesion to substrates (for example chipboard, plywood, etc).

TYPE P (POSTFORMABLE QUALITY) OFI CERT HPL EN 438 HGP

Essentially, this quality corresponds to Type S (HGS), but can be used in pre-determined conditions such as temperature, heating times, etc. (postforming process).

During a cold forming process, cracking may occur with HPL laminate boards, irregardless of the size of the radius.

OFI CERT confirms compliance with EN 438.



Standard Surface:

FH – FINE HAMMER EMBOSSED

Versatile, easy to clean and highly resistant. One of our classic surfaces which has proved itself in interior design for many years.



The mark of responsible forestry
FSC® C101966





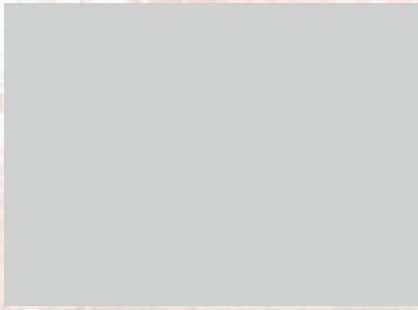
0759 Graphite Black



2206 Fango



0648 Dark Brown



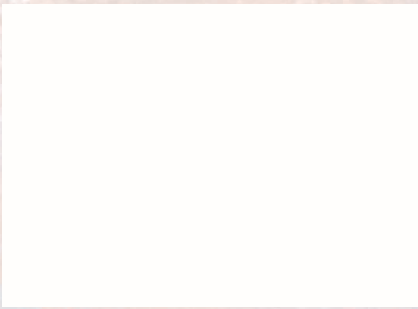
0730 Ash Grey



0755 Warm Grey Dark



0023 Lamar



2286 White Syringa



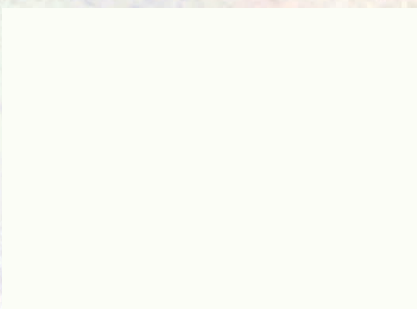
0318 Ruby Red



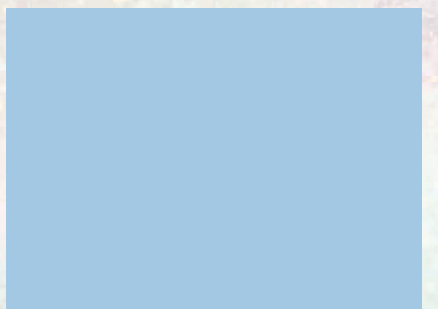
0085 White



0717 Atlantic



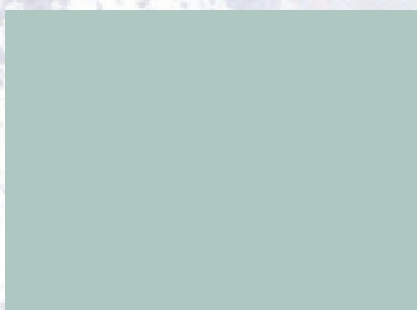
0112 Top White



0718 Arctic



0042 Marino



0630 Sea Green



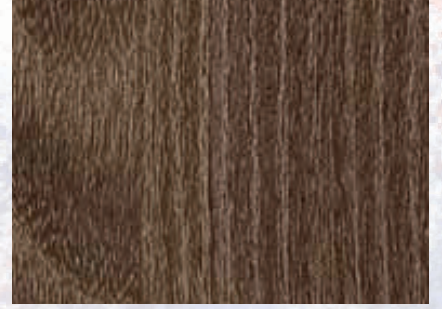
0041 Tortuga



0171 Tundra Birch



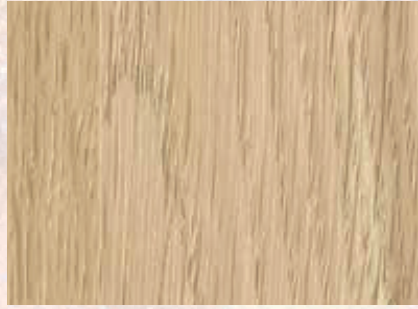
0175 Knot Fir



0244 Santos



0252 Madera



0290 Akari



0474 Calimero



0291 Beech II



0047 Wild Beech



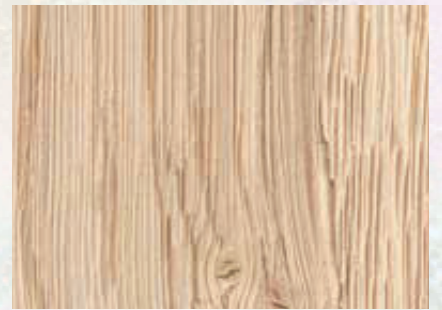
0125 Natural Oak



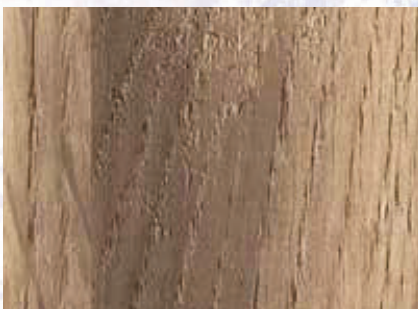
0361 Serenissima



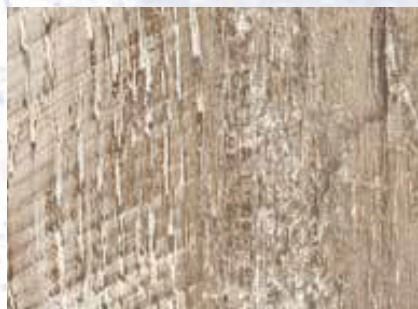
0813 Rocco



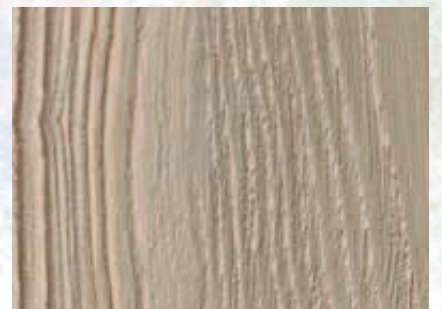
0367 Alona



0411 Albatros



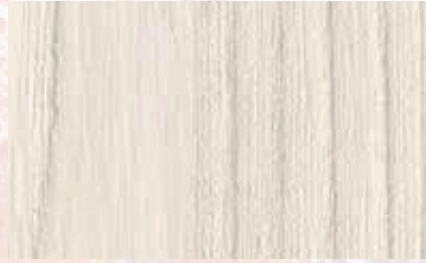
0414 Harlekin



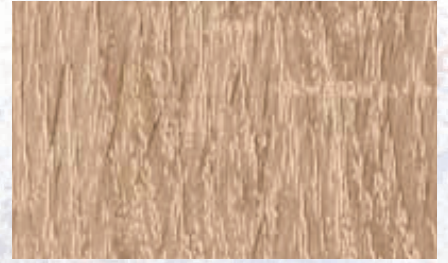
0424 Callisto



0102 Maple



0814 Canto



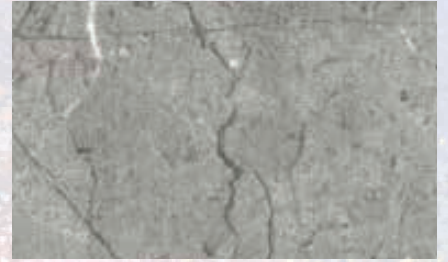
0877 Light Sawcut Oak



0921 Brown Silver Fir



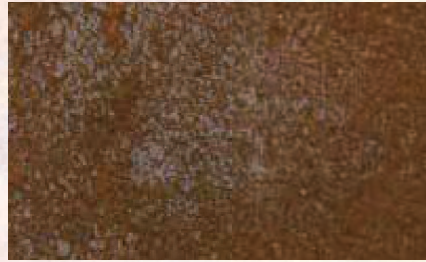
0026 Prado Alu Grey



0585 Castello



0581 Lentos



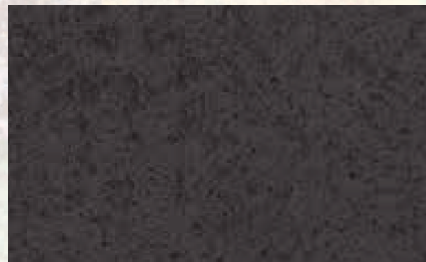
0533 Sphinx



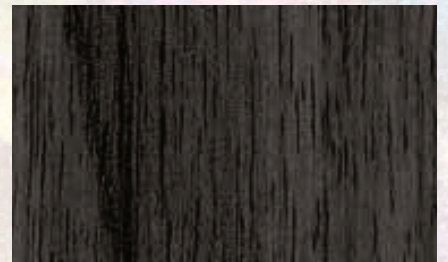
0328 Brushed Aluminium



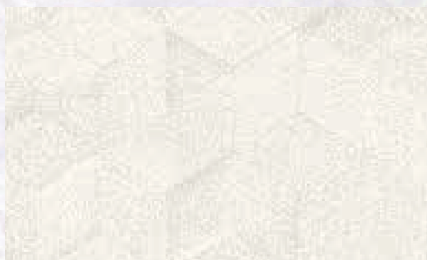
0567 Manga



0566 Kara



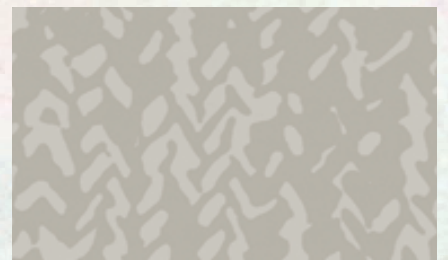
0534 Monsun



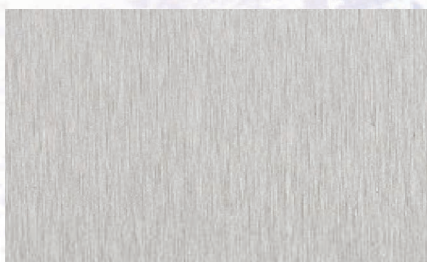
0493 Prisma



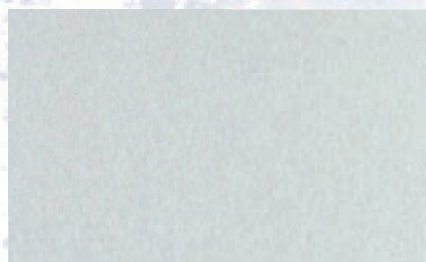
0498 Nexus



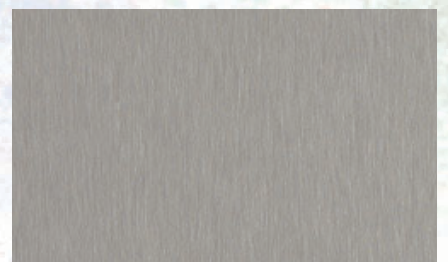
0527 Lana



M001 Natural Alu



M002 Alu Topmatt



M003 Alu Stainless Steel
Nuance



FUNDERMAX®

GIBCA  **جی بی سی**
GIBCA LIMITED COMPANY (FZC) LLC



AP – APTICO

A patented technology makes this matt surface a sensation: easy to clean, very easy to work with and with an irresistible appearance. The result is characterized by a special anti-fingerprint effect.

At a glance

- Warm feel with a fine texture
- Easy to clean and very easy to work with
- Anti-fingerprint effect



ANTI-FINGERPRINT FINISH



0080 Black



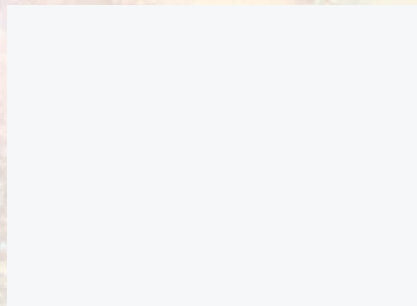
0075 Dark Grey



0077 Charcoal



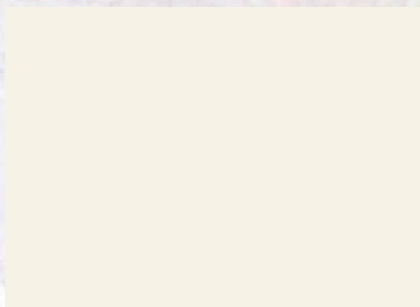
0753 Cool Grey Medium



0606 Arctic White



0746 Hygienic Grey



0733 Hygienic White



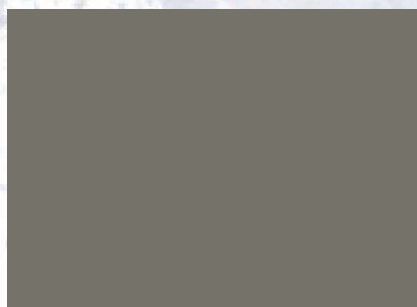
0693 Orchid



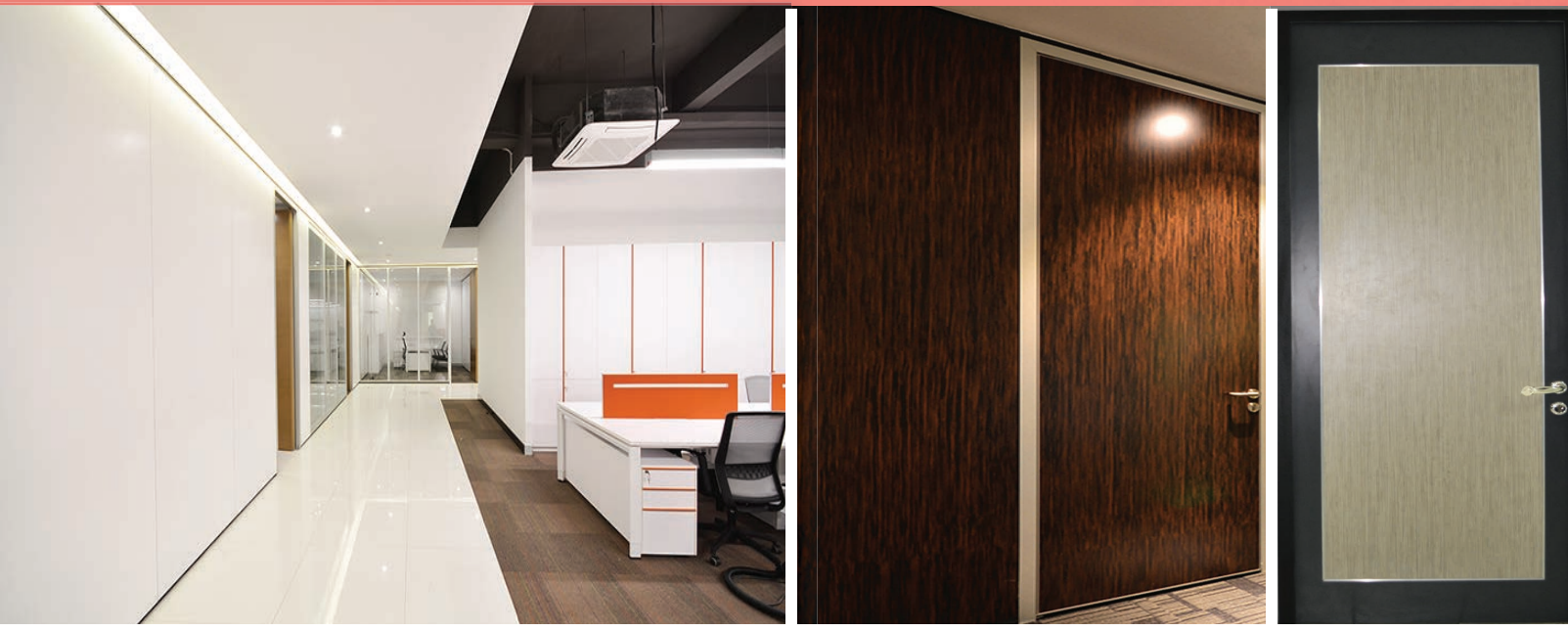
0018 Divaro



2289 Tortora



0755 Warm Grey Dark



Be different. Be inspired. Bring your vision to life.
Let your ideas come to life with our unique interior products.



📍: P.O.Box 312, Postal Code 322, Sohar, **Sultanate of Oman**

☎: + 968 2685 0261, 📠: + 968 2685 0258, ✉: info@gibcaoman.com, 🌐: www.gibcaoman.com